

**Balcony Inspection**

- Assessed the condition of prestressing strands in precast concrete balcony slabs using InspecTerra’s proprietary iCamm scanning tool
- Each balcony consisted of multiple 48" wide by 8" thick hollow precast concrete slabs that cantilever beyond the face of the building by 5 feet
- The reinforcement consisted of standard 7/16" diameter 7 wire prestressing strands
- The top side of each balcony was covered with a 20-50 mm thick non-reinforced concrete topping layer
- The magnetic properties of each prestressing strand were scanned directly through the concrete topping layer, and analyzed and interpreted for the degree of corrosion

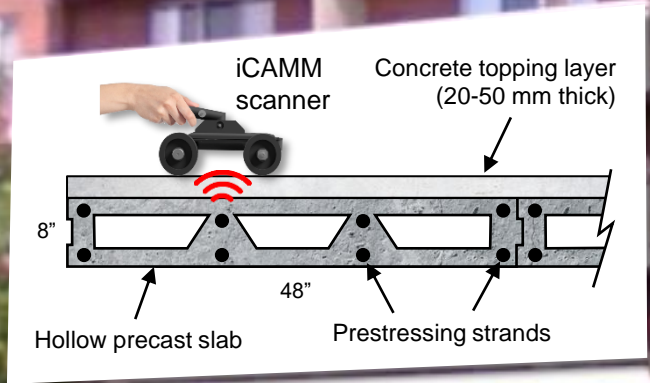
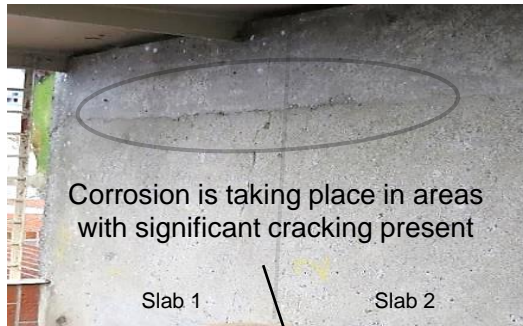


Photo of the balcony for visual comparison



**Highlights**

- Each balcony was inspected in less than 1 hour
- **Quantified** the section loss in each prestressing strand due to corrosion
- Results were well correlated with visual observations on the concrete surface
- iCamm provides **quantitative** results quickly and effectively for steel reinforcement under cover

